

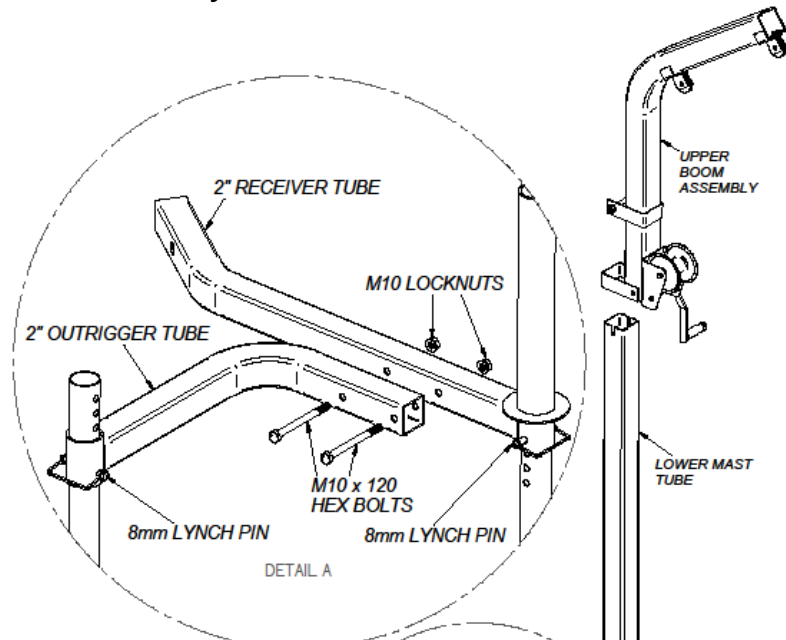
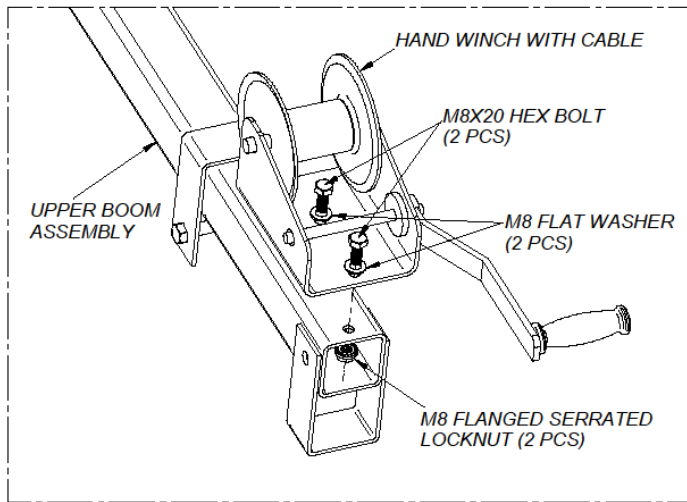


Magnum Rack-Jack Receiver Mounted Utility Hoist Assembly and Use Instructions

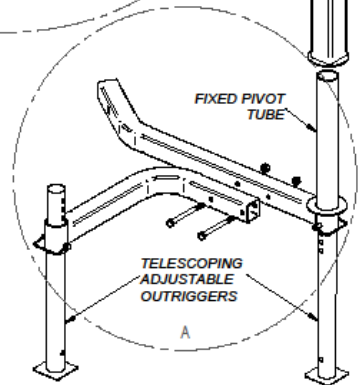
Assembly Tools Required:
 Slip Joint or Vice-Grip Pliers
 13mm, 17mm, 18mm Box or Open End Wrench
 (or an adjustable Crescent type wrench)

Step 1: Mounting the Cable Winch (one time assembly)

The winch is mounted to the upper boom assembly using two 8mm hex bolts, two flat washers and two flanged locknuts. Mount the winch to the bracket as shown in figure 1. Tighten the hex bolts securely. Holding the flanged locknuts inside the tube using a box end wrench simplifies this connection.



Magnum Rack-Jack Parts Overview



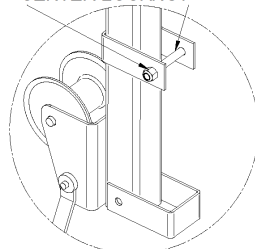
Step 2: Cable Pulley Attachment

Position the cable around the pulleys as shown in Figure 2 and Detail A. Align the pulley between the pulley brackets and insert the 8mm Clevis Pin through the bracket and pulley. Secure the pin using the 2mm Cotter Pin and flare one side of the pin using pliers.

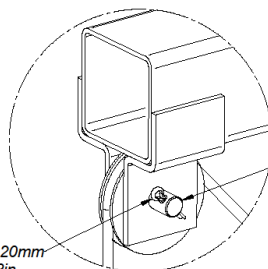
Step 3: Attach the Coupling Locking Bolt, washer and center locknut as shown in Detail E.

Tighten the locknut until it just contacts the bracket. Do not "squeeze" the bracket closed. This bolt may turn freely when properly installed.

COUPLING LOCKING BOLT, WASHER AND CENTER LOCKNUT



DETAIL E



DETAIL A

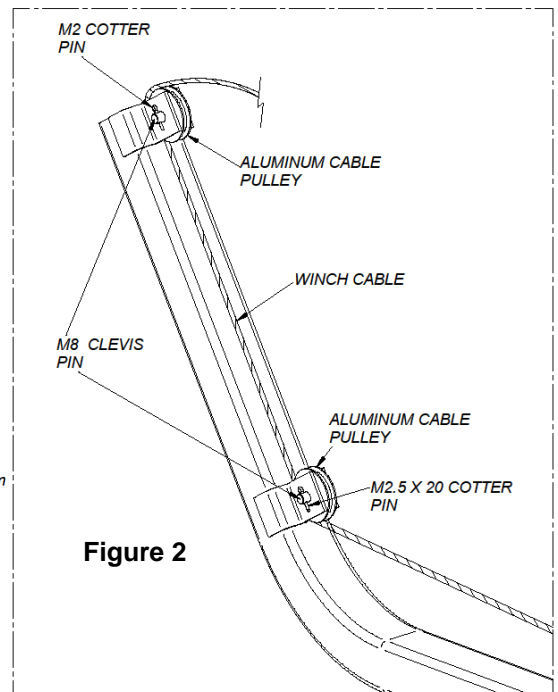


Figure 2

Instructions for using the Viking Magnum Rack-Jack



WARNING !

Failure to read and follow all instructions may result in serious injury or death. Never exceed the maximum lifting capacity of 650 Lbs. Use appropriate slings and always assure the load is balanced before lifting. Always use caution to avoid pinch points during assembly of the mast coupling joint. Always verify the anti-reverse ratchet lever is properly engaged before lifting. Never operate any vehicle with the hoist connected. When lowering any load, always maintain a firm hold on the winch handle.

Step 1: Insert the receiver coupling assembly into a 2" Class III or Class IV (300 Lb. minimum tongue weight capacity) making sure to align the clevis pin hole with the mating hole on the receiver hitch. Secure with an appropriate locking clevis pin and cotter pin (not included). Do not use the Magnum Rack Jack before securing the receiver coupling assembly into the receiver with a locking pin.

Step 2: With the Coupling Locking Slot up, hold the Base Column tube vertical over the Fixed Pivot Tube of the Receiver Tube Assembly. Slide the Base Column onto the Fixed Pivot Tube until it is seated against the Thrust Bearing Plate, as shown in Figure 4.

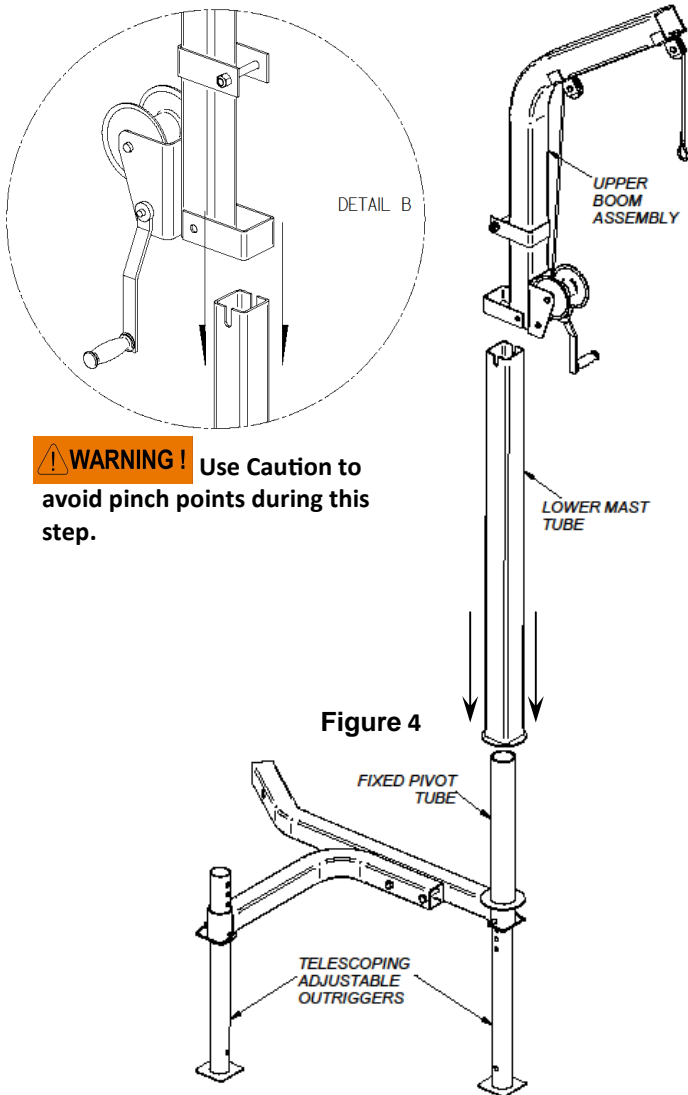


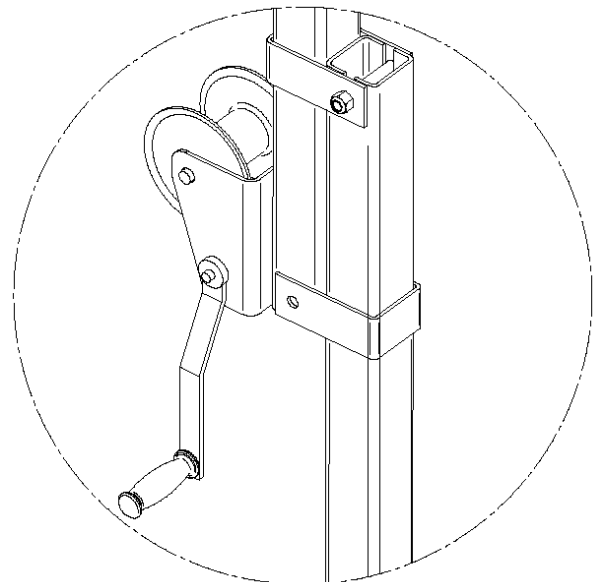
Figure 4

Step 3: Lift the Upper Boom Assembly above the Lower Mast Tube as shown in Figure 4 and Detail B. Use extreme caution to avoid finger pinch points during this operation. Slide the Coupling Brackets over the Base Column as shown until the Coupling Locking Bolt is fully seated in the Coupling Locking Slot, as shown in Detail C. Finally, remove the locking lynch pins from the adjustable outrigger and lower to approximately 1" from the ground, then reinstall the lynch pins and secure the locking wire. The Magnum Rack-Jack hoist is now ready for lifting.



WARNING !

Do not lift any object until all of these steps are completed. Always remember to use appropriately rated slings and proper rigging techniques for the load being raised. Never allow any person or property underneath a raised object, and always use good judgement to safely operate this hoist.



DETAIL C

Helpful Hints: Because the suspension system of the vehicle will compress when loaded, it is recommended to keep the adjustable outrigger pads slightly off the ground before loading. This will make removal of the locking lynch pins easier when the load is transferred to the vehicle.